
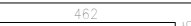


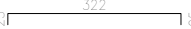


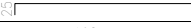












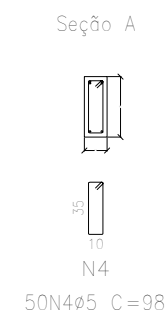
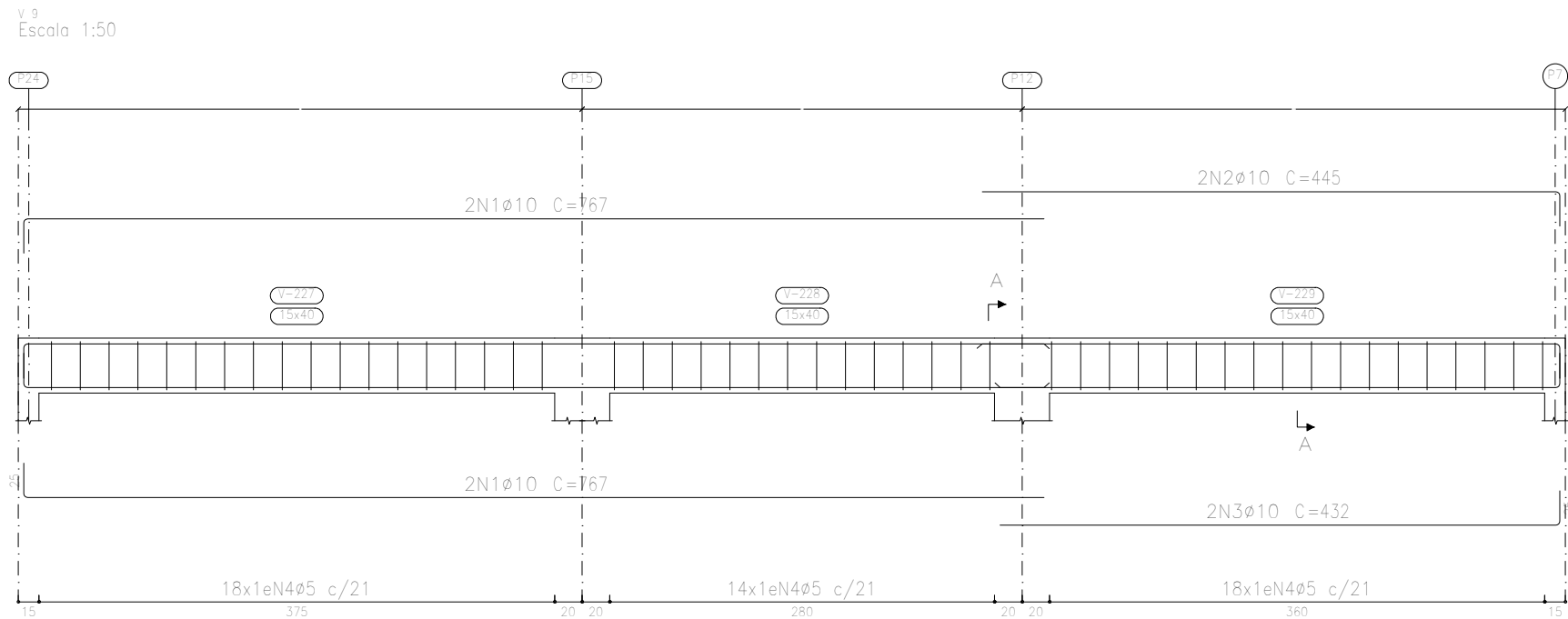
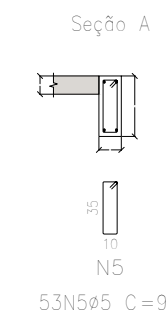
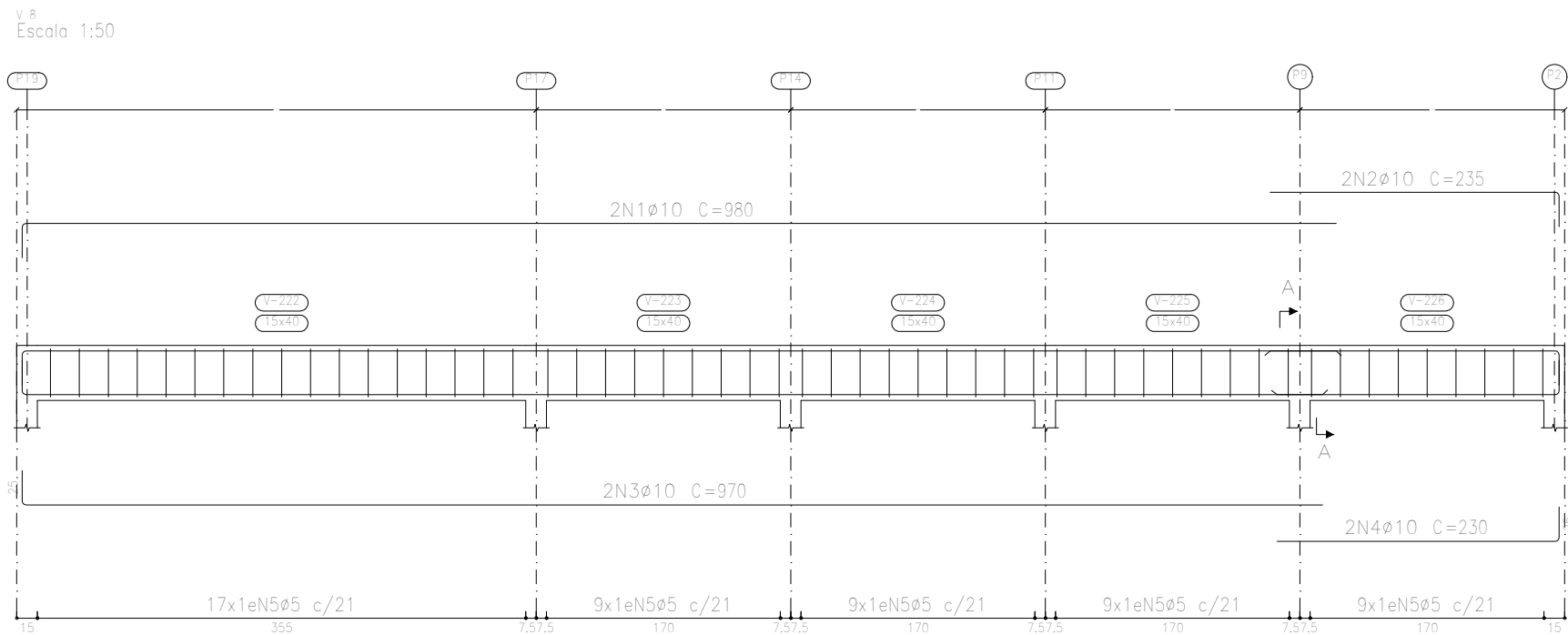
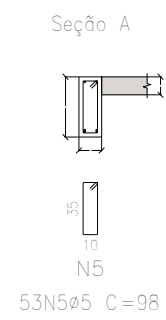
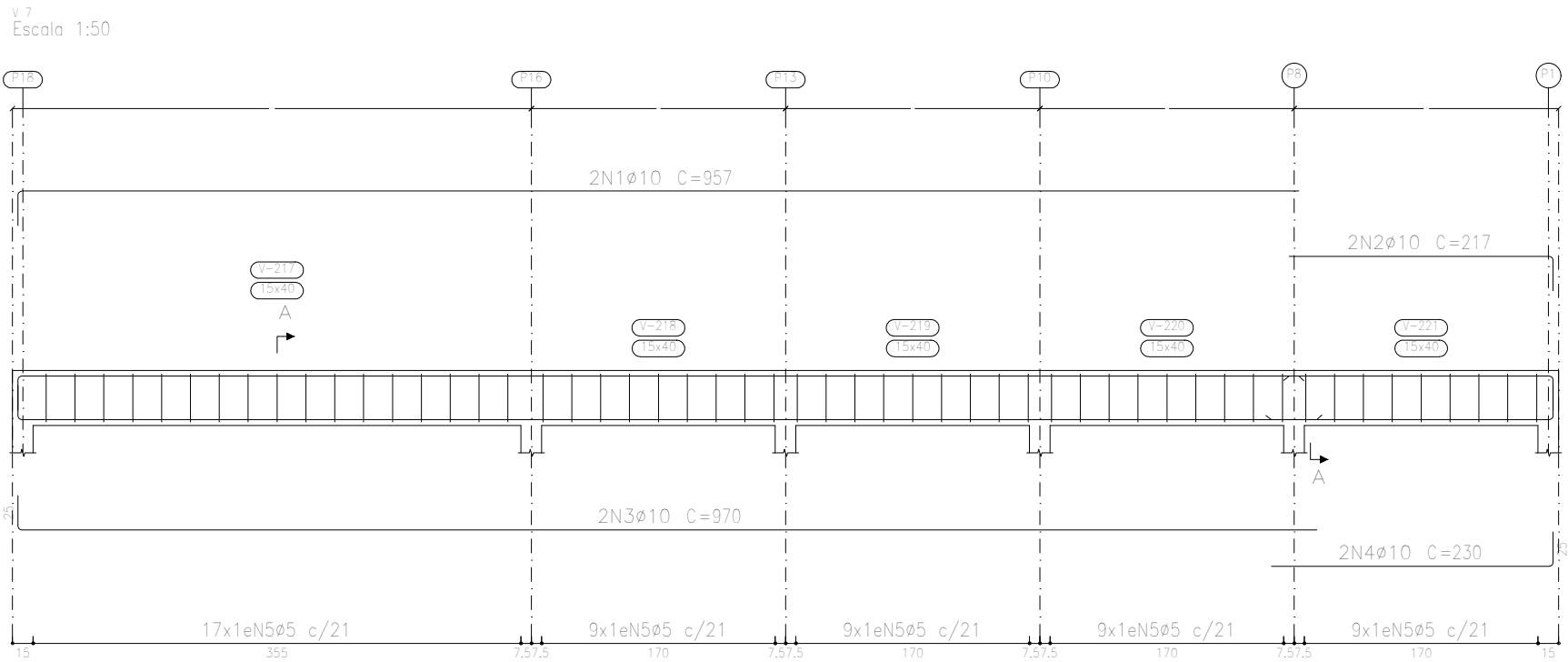


Resumo Aço		Comp. total	Peso+10%	Total
Desenho de vigas		(m)	(kg)	
CA-50	ø10	403.3	273	273
CA-60	ø5	403.8	70	70
Total				343

Piso 2
Desenho de vigas
Concreto: C25, em geral
Aço das barras: CA-50 e CA-60
Aço dos estribos: CA-50 e CA-60
Escala vigas 1:50
Escala seções 1:50
Escala aberturas 1:50

Elemento	Pos.	Diam.	Q.	Esquema (cm)	Comp. (cm)	Total (cm)	CA-50 (kg)	CA-60 (kg)
V 1=V 6	1	ø10	4		1025	4100	25.3	
	2	ø10	4		985	3940	24.3	
	3	ø10	4		487	1948	12.0	
	4	ø5	104		98	10192		16.0
	Total+10%:							67.8
							(x2):	135.6
V 2=V 3=V 4=V 5	1	ø10	4		372	1488	9.2	
	2	ø5	12		98	1176		1.8
	Total+10%:							10.1
							(x4):	40.4
V 7	1	ø10	2		957	1914	11.8	
	2	ø10	2		217	434	2.7	
	3	ø10	2		970	1940	12.0	
	4	ø10	2		230	460	2.8	
	5	ø5	53		98	5194		8.2
Total+10%:							32.2	3.0
V 8	1	ø10	2		980	1960	12.1	
	2	ø10	2		235	470	2.9	
	3	ø10	2		970	1940	12.0	
	4	ø10	2		230	460	2.8	
	5	ø5	53		98	5194		8.2
Total+10%:							32.8	3.0
V 9	1	ø10	4		767	3068	18.9	
	2	ø10	2		445	890	5.5	
	3	ø10	2		432	864	5.3	
	4	ø5	50		98	4900		7.7
Total+10%:							32.7	8.5
							ø5:	0.0
							ø10:	69.7
							Total:	273.7
								0.0
								69.7



Unidade de Reabilitação	Data:	10/10/2024
Local:	Unidade de Reabilitação	Número de desenho:
Promotor:	Prefeitura Municipal de Campos de Júlio	
Projeto Estrutural	Escala:	Indicada
Eduardo Rampanelli Tosetto	Data:	10/10/2024
Engenheiro Civil		
Número do CREA:	1220503037	